



EMPTY CONTAINER RETURN ACCEPTANCE POLICY

“Recycle Today for Tomorrow’s Future”



Qualifications for return:

- Safety Data Sheets (SDS) must be made immediately available to Enterprize Container Corp. upon ECC's request for products previously contained in any IBC or drum sent to ECC.
- Containers must be completely empty (drip dry) before shipping to ECC's facility. If the valve or bung is opened and product can be poured out, the container is not completely empty.
- All caps and labels must be in place and valves must be closed. DOT 49 CFR § 173.29 states that all openings of the empty containers must be closed, and that all markings and labels must be in place as if the container was full of its original contents.
- An Enterprize Container Corp Bill of Lading must accompany any shipment of containers sent to ECC. The ECC BOL must be signed at the time of shipment by a representative of the shipper's company.
- For residues or products specifically named in 40 CFR §261.31, .32, or .33(e) the container is empty **only** if the container has been triple rinsed using a solvent capable of removing the last contained material, then drip dried as described above. (See ECC form ["40 CFR 261 Rinse x3.pdf"](#)).



IBC TOTE RETURN ACCEPTANCE POLICY

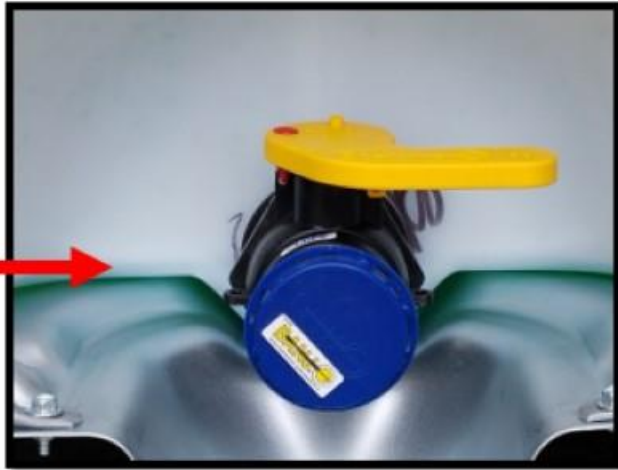
Recycle Today for Tomorrow's Future!



Acceptable EMPTY Container:

This container is considered empty...

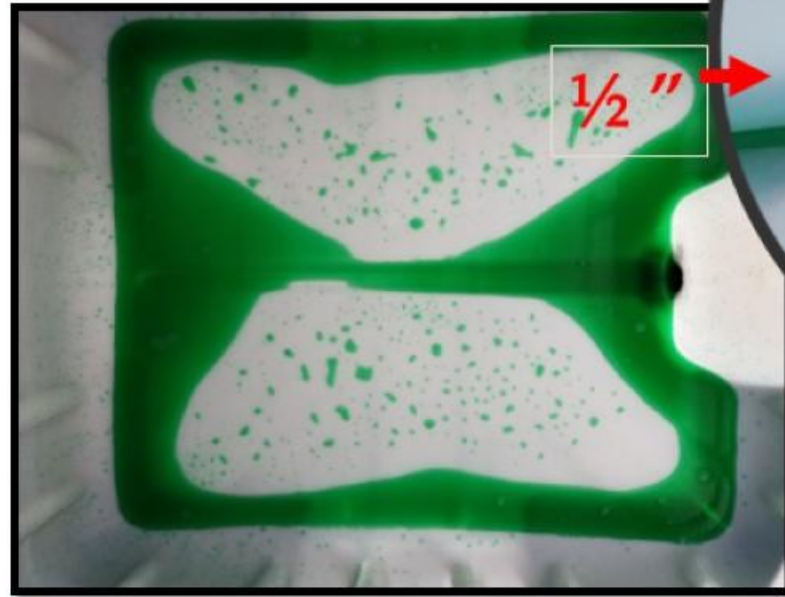
Drip Dry





Acceptable EMPTY Container:

This container is RCRA empty and contents must be disposed of at ECC in accordance with all federal, state and local guidelines...

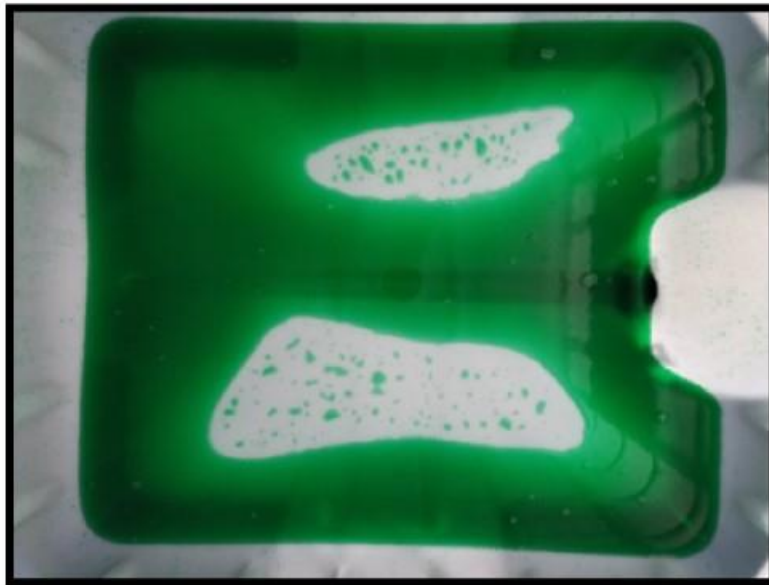




Non-Compliant EMPTY Container:

These containers are not RCRA empty, and would be subject to compliant heel disposal charges.

3 Gallons



Recycle Today for Tomorrow's Future!

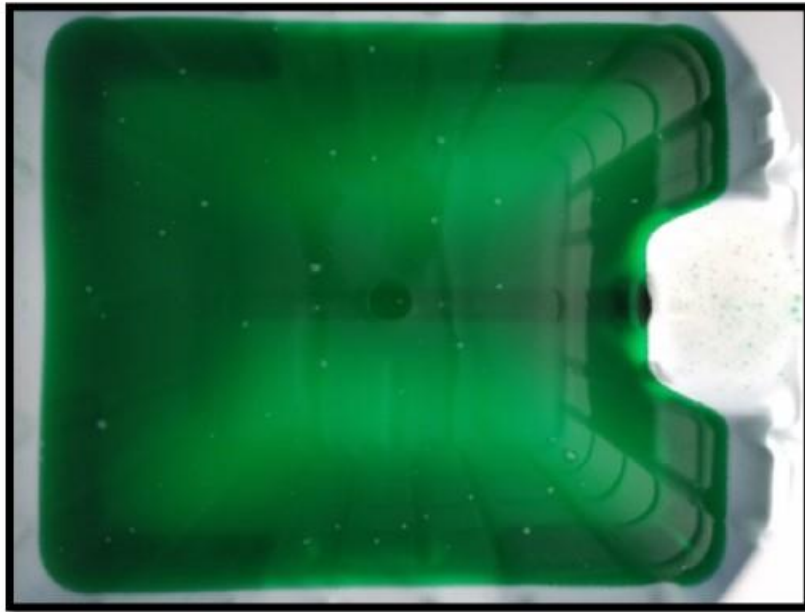
CONTAINER RETURN ACCEPTANCE POLICY



Non-Compliant EMPTY Container:

These containers are not RCRA empty, and would be subject to compliant heel disposal charges.

7 Gallons



Recycle Today for Tomorrow's Future!

CONTAINER RETURN ACCEPTANCE POLICY

Non-Compliance on Returned Containers:



- IBC's that **DO NOT** meet the empty container requirements or the Terms and Conditions of Acceptance, will be rejected from delivery.
 - Non-compliant tote returns will be charged an emptying fee per gallon, a disposal fee per container, and a handling fee.
- Option 1: Any container received with excess **HAZARDOUS** residue or product specifically named in 40 CFR §261.31, .32, or .33(e), the container will be rejected and returned to the customer *at their expense* and will also incur a \$50 *per container handling fee*. *Customer will be required to provide a BOL for return shipment.*
- Option 2: Any container last containing **NON-HAZARDOUS** material should be **DRIP DRY** with all closures and original labels in place.
- Enterprize will accept up to ½" of non hazardous material at no charge to the customer.
 - Any container received with excess of ½" of non hazardous residue, will result in the customer being charged a disposal fee of \$10 per gallon *plus* an additional handling fee; *or* the container will be returned to the customer at the shippers expense and be subject to any handling fees that apply.



POLY DRUM RETURN ACCEPTANCE POLICY

Recycle Today for Tomorrow's Future!



Acceptable EMPTY Container:

Completely Drip Dried:

*A container is **COMPLETELY EMPTY** when all free flowing residues that cling to the interior surface of the container have been poured or scraped out, exposing 95% or more of the container's original surface.*



Less than 1/2" →



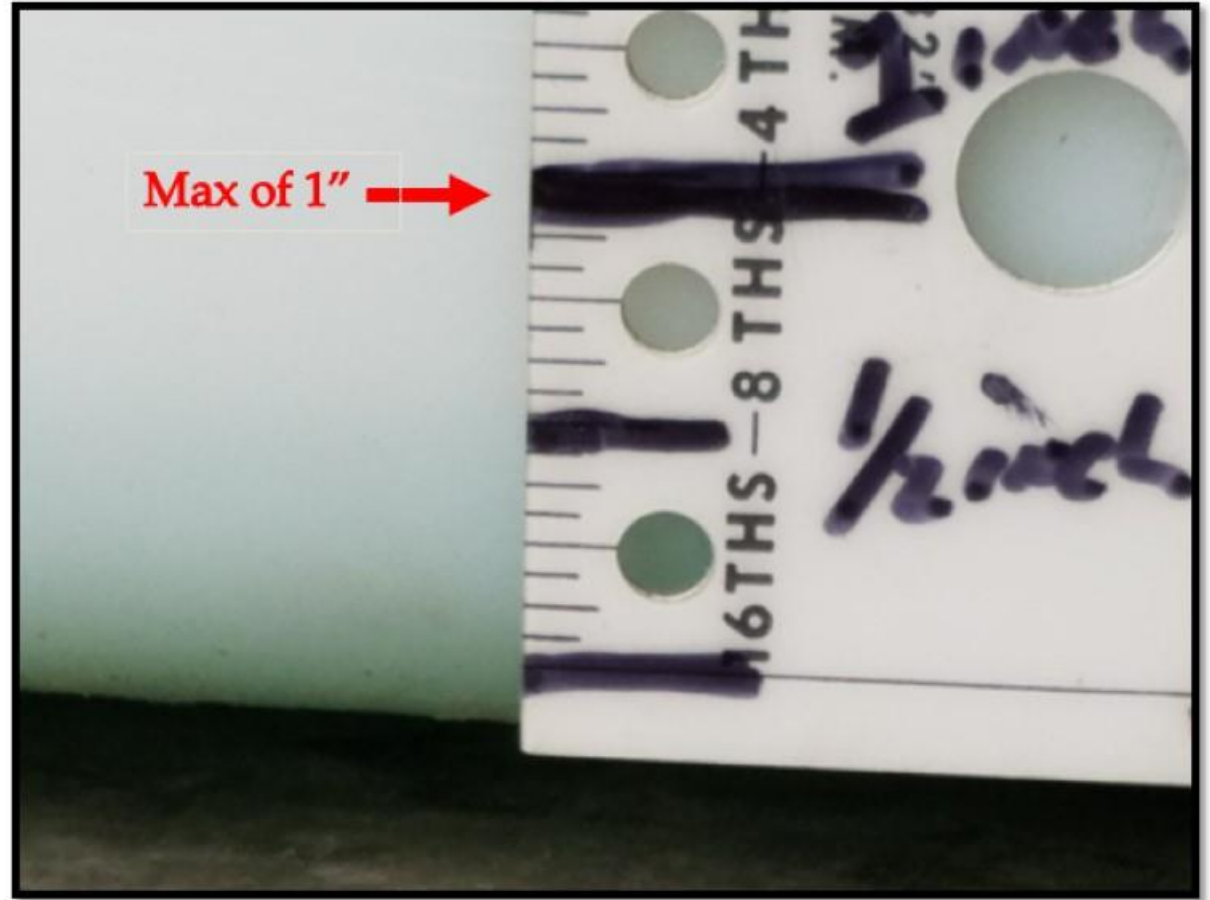
Acceptable EMPTY Container:

1" or less in container:

The [EPA's 40 CFR §261.7](#) states that, with regard to most regulated residues, a container is **EMPTY** if:

All wastes have been removed that can be removed using the practices commonly employed to remove materials from that type of container, such as pouring, pumping, or aspirating;

No more than 1" or 2.5 centimeters of residue remains in the bottom of the container if it is less than 110 gallons in size;



Non-Compliance on Returned Containers:



- Drums that **do not** meet the empty container requirement or the Terms and Conditions of Acceptance will be rejected from pick-up.
 - Non-compliant drum returns will be charged an emptying fee per gallon, a disposal fee per container, and a handling fee.
- Option 1: Any container received with excess hazardous residue or product specifically named in [40 CFR §261.31, .32, or .33\(e\)](#), the container will be rejected and returned to the customer *at their expense* and will also incur a *\$50 per container handling fee*. *Customer will be required to provide a BOL for return shipment.*
- Option 2: Any container last containing non-hazardous material should be **drip dry** with all closures and original labels in place.
- Enterprize will accept up to ½" of non hazardous material at no charge to the customer.
 - Any container received with excess of ½" of non hazardous residue, will result in the customer being charged a disposal fee of \$10 per gallon *plus* an additional handling fee; **or** the container will be returned to the customer at the shippers expense and be subject to any handling fees that apply.



Non-Acceptable EMPTY Container:

These containers are not RCRA empty, and would be subject to compliant heel disposal charges.

